

Taylor*made* RACING INC

Installation Guide 2009-2011 Suzuki GSXR 1000 Exhaust Kit



**!! THIS PRODUCT IS DESIGNED FOR USE IN
CLOSED COURSE RACING AND IS NOT INTENDED
FOR HIGHWAY USE!!**

Congratulations on the purchase of your new TaylorMade underbelly exhaust kit for your GSXR. All components of your new exhaust are fabricated from thin wall stainless steel so will never rust. The black finish is a baked on ceramic coating and only requires washing with soap and water to keep clean. We recommend regular application of Turtle Wax, Color Magic in black to keep your carbon fiber looking new.

Any competent mechanic with basic tools can install the kit but if you have any doubts in your mechanical abilities entrust installation to an experienced workshop. Time to fit is approximately 1 - 2 hours depending on familiarity. All directions are given as if you are sat on the bike: e.g. Left = gear change side.

Fitting is straightforward but please do read the instructions carefully, as they will help you get the job done quicker and more easily.

Tool List :

- 4 mm allen wrench
- Small flat head screw driver
- 10 mm socket
- 12 mm socket

Parts List:

- 1 Right side Carbon Fiber Trim Piece
- 1 Left side Carbon Fiber Trim Piece
- 1 Muffler with Trim Bracket
- 1 Muffler Strap
- 1 Left side Trim Bracket
- 1 Plastic rivet
- 1 Muffler Clamp
- 1 45 mm Trim Grip
- 1 Oxygen Sensor Blanking Plug

STAGE ONE – DISASSEMBLY

1) Disconnect Oxygen Sensor.

a. Remove Tank/Seat Side Panels.

One screw at the front of each panel and two pullout tabs at the rear.

b. Remove Rider's Seat.

Two screws located at the front of the seat.

c. Raise Gas Tank.

Two screws located at the front and prop up gas tank using the prop stand located under the rider's seat.

d. Disconnect the black plug attached to the oxygen sensor, located at the right hand side of the throttle bodies.



e. Insert white blanking plug that was included in your kit and thread cable through rear of the chassis.

f. Replace tank, rider's seat and side panels.

2) Remove Stock Exhaust

a. Remove screws from the rear left and right sides of the stock belly pan.

b. Remove right hand muffler, then left hand muffler.

- 3) Remove three mounting bolts from the stock muffler box

One is on right hand side at the front of the box and two are on the left hand side.



- 4) Release clamp at the front of the muffler box.

- 5) Slide muffler box off headers and to the rear.

Note: Ensure fiber sealing washer is removed from header. (Figure 1)



- 6) Remove heat shield from the right hand side of muffler box.

- 7) Remove rubber grommet and top hat. Save the bolts. (Figure 2)



- 8) Install rubber grommets and top hats into hole in rear tabs of carbon fiber trim pieces. (Figure 3)



STAGE TWO – ASSEMBLY

- 1) Slide strap over rear end of muffler with tabs on the left hand side. (Figure 4)

- 2) Slide muffler over header and push fully up to stop ring on the header.

- 3) Align strap with rear stock mount and bolt in place with stock bolt and M8 washer and Nyloc nut. (Figure 5)

- 4) Tighten muffler clamp sufficiently tight so the muffler is gripped but can still rotate.



5) Mount right hand carbon trim behind rear of stock bodywork at the front and OVER the exhaust exit at the rear. (Figure 6)



6) Screw in stock front bolt and mount rear tab of trim using the stock bolt you saved when removing stock muffler heat shield. Place trim grip over front/bottom overlap of stock body work and carbon trim.



Note: Make sure it grips both pieces together. (Figure 7)

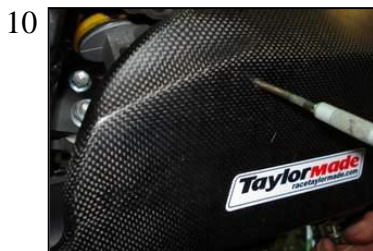
7) Centralize the exhaust exit in trim; this may require rotating the muffler. When satisfied, **tighten muffler clamp to 25 ft/lbs.** (Figure 8) Tighten front and rear screws.



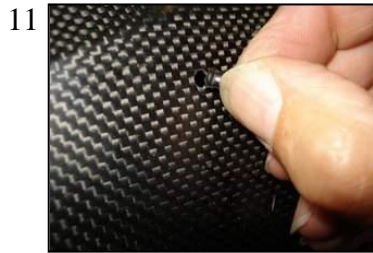
8) Use top mounting bolt of stock rear muffler mounting plate to attach to the left hand trim bracket. Tighten only using your fingers, at this stage. (Figure 9)



9) Mount up left hand trim piece behind rear of stock bodywork, use stock bolt to attach rear tab to rear muffler bracket.



10) Align the hole in trim with the hole in the trim bracket (you can use a small awl or screw driver to help line up the holes). (Figure 10) Separate the plastic rivet and push the center shell through the hole in the trim piece and bracket. Press the inner rivet through the hole and snap tight. (Figure 11)



11) Go back and tighten the mounting bolt of the trim bracket.

Place the muffler so there is no contact between the exit and the trim panel. Be sure muffler exit protrudes through the exhaust hole in trim 1-2 millimeters to avoid damaging the carbon fiber trim. The exhaust exit should not sit flush with the trim.

Now, stand back and take a moment to admire the results of all your hard work. All that remains is to fire her up and go for a spin.

After running the bike for approximately 100 miles, go over all fasteners and check for tightness-pay particular attention to tighten muffler clamp to 25ft/lbs.

TMR recommends the use of Loctite and safety wire in all racing applications. If you experience any problems with the fitment of your TaylorMade Exhaust components or these instructions, the technicians at TaylorMade will be pleased to help. Just give us a call.

Safe Riding, Paul Taylor

Proper care guidelines for your TaylorMade Exhaust

All components of your new exhaust are fabricated from thin wall stainless steel so it will never rust. The black finish is a baked-on ceramic coating which only requires washing with soap and water to help keep it clean. To keep your carbon fiber looking new, we recommend a regular application of Turtle Wax's "Color Magic" in black. The muffler has an absorption design which relies on a fiberglass packing to absorb noise, heat and vibration. Over time the packing will degrade and will require replacing to maintain sound absorption quality and integrity of the muffler. In normal use repacking will be necessary every 6000-7000 miles. Extended periods of use at high RPMs will significantly reduce this service interval. A sure sign that repacking is required is when there is a noticeable increase in sound level. When your muffler needs servicing please contact our service team here at TaylorMade, who will be pleased to inspect and refurbish your muffler at a minimal cost.

WARRANTY AND LIMITATIONS

Regarding products sold by TaylorMade Racing Inc. (TaylorMade) e.g., exhaust systems, composites, billet parts, etc., TaylorMade warrants these products against defects arising out of failure due to material and/or workmanship for a period of 1 year from the date of purchase regardless of actual "in service" date. This warranty is limited to the repair or replacement of the item solely at the discretion of TaylorMade. Such repair or replacement will be determined based solely on TaylorMade's evaluation of the item's intended and actual use.** Regarding products purchased from TaylorMade but not manufactured by TaylorMade, NO WARRANTIES WHATSOEVER are granted or implied. Any and all claims regarding items sold by TaylorMade but not manufactured by TaylorMade are to be referred to and disposed of by the actual manufacturer. Claims regarding these items may be administered by TaylorMade or referred to the actual manufacturer at TaylorMade's discretion.

EXCLUSIONS

This warranty does not cover finishes such as plating or paint nor their failure due to discoloration from heat, weathering, or abuse. Nor does it cover any failure due to damage arising out of improper installation, crash damage or incompatibility with other components. In any event, TaylorMade accepts no liability for any damage to vehicles or persons arising out of the use and/or abuse of a vehicle equipped with TaylorMade components, nor will TaylorMade accept liability for damage to injury or persons from the use or abuse of the product itself, whether direct or indirect, voluntary or involuntary. TaylorMade will not be responsible for any dispositions made by dealers or distributors of products. TaylorMade will not be responsible for any labor charges incurred by the customer for the installation or removal of the TaylorMade component or changes arising out of the collateral damage to the vehicle or persons while installing, removing, or using any item purchased from or supplied by TaylorMade whether manufactured by TaylorMade or not.

RETURN POLICY

TaylorMade will not be responsible for any shipping charges by the purchaser in returning the part to TaylorMade for evaluation. A return authorization number and a copy of the purchaser's invoice or receipt must accompany all returns. Parts returned without authorization may be refused.

DISCLAIMER

TAYLORMADE EXHAUST SYSTEMS, ENGINE PARTS, OR ANY PART WHICH MAY EFFECT EMISSION REGULATION COMPLIANCE ARE FOR OFF HIGHWAY USE ONLY AND ARE NOT FOR SALE OR USE ON CALIFORNIA POLLUTION CONTROLLED VEHICLES OR IN OTHER STATES WHERE POLLUTION CONTROL LAWS APPLY. SUITABILITY OF APPLICATION IS THE SOLE RESPONSIBILITY OF THE PURCHASER

**Failure to abide by the care guidelines outlined in the installation guide, will void any warranty terms listed above. Mufflers returned for refurbishment under warranty will be subject to inspection by TaylorMade technicians. If upon inspection our technicians deem that damage has occurred due to neglect, the customer will have the option to pay a refurbishment fee or to ship the muffler to their return address.

7712 Gloria Ave Van Nuys California 91406

818 781 8123

WWW.RACETAYLORMADE.COM